



# OMEGA Series

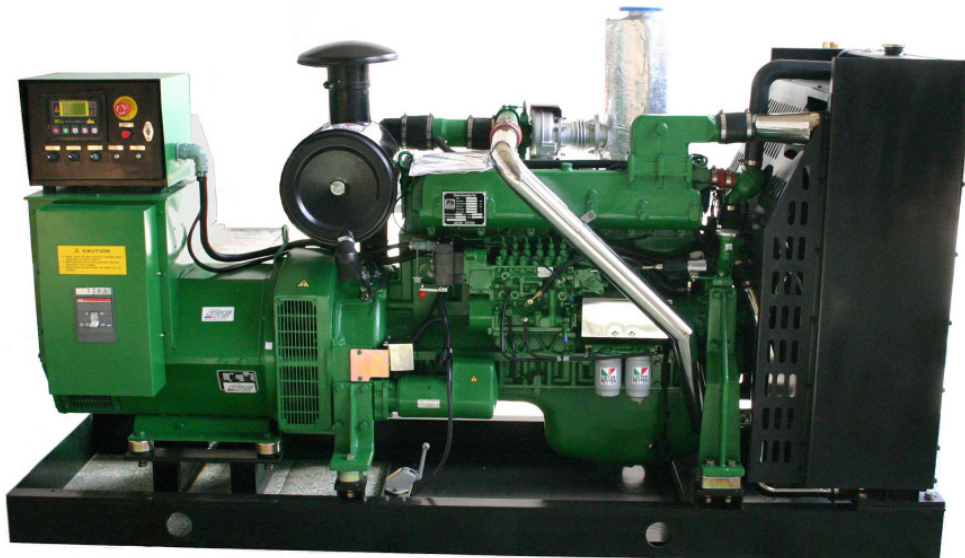
## LL0 200 Genset (50 Hz)

**LL0 200/175, LL0 200/200, LL0 200/225**

*Prime power outputs: 175 kVA, 200 kVA, 225 kVA*  
*Standby power outputs: 193 kVA, 220 kVA, 248 kVA*

---

*Heavy-duty radiator-cooled base-mounted open generating set*



### Features

- Three-phase, 50 Hz
- OMEGA 200 water-cooled turbocharged intercooled six-cylinder diesel engine
- control panel with electronic digital control module
- tropical radiator for excellent cooling
- single-bearing brushless alternator
- guarded pusher fan, to keep control module, alternator and engine cool
- anti-vibration mounts on engine and alternator
- battery leads and brackets
- fabricated steel skid base
- electro-mechanical governing
- operators' handbook

### Optional Items

- cold-start capability to -40 °C
- tool kit

## OMEGA Series: LLO 200 Genset (50 Hz) Technical Data Sheet

### Engine Features

- 24-volt electric starting
- 35 Amp battery-charging alternator
- twin oil and fuel filters
- heavy-duty air cleaner
- fuel solenoid

### Alternator Specifications

- single-bearing brushless
- solid state AVR with  $\pm 1.5\%$  voltage regulation as standard
- class "H" insulation on the rotor and stator
- IP22 protection class

### Control System Features

The control system provides:

- manual and automatic control
- emergency stop button
- power switch
- idle switch
- cold start switch
- AC circuit breaker
- monitoring of generating set functions
- lockable preset controls for frequency (speed) and voltage adjustment

Power Outputs					
Model	Frequency	Power Rating			Voltage
LLO 200/175	50 Hz 1500 r/min	Prime	175 kVA	140 kW	3-phase 380/220 400/230 415/240
		Standby	193 kVA	154 kW	
LLO 200/200	50 Hz 1500 r/min	Prime	200 kVA	160 kW	3-phase 380/220 400/230 415/240
		Standby	220 kVA	176 kW	
LLO 200/225	50 Hz 1500 r/min	Prime	225 kVA	180 kW	3-phase 380/220 400/230 415/240
		Standby	248 kVA	198 kW	

All ratings in the table above are in accordance with ISO 8528-1. Power Factor: 0.8 pf. Other products are available; refer to Lister Petter for details.

# OMEGA Series: LLO 200 Genset (50 Hz) Technical Data Sheet

## Control Module Features

The control module displays:

- voltage (V)
- current (A)
- power (kW)
- power factor
- frequency (Hz)
- engine water temperature (°C)
- engine speed (r/min)
- battery voltage (V)
- engine oil pressure (kPa)
- hours run (h/min/sec)
- cumulative energy generated (kWh)
- date and time (digital)
- mains voltage (V)
- generator voltage (V)
- load (A)
- mode (manual or automatic)

## Fault Warnings

The generating set will warn of the following fault conditions:

- cooling-water temperature too high
- lubricating-oil pressure too low
- engine speed outside set parameters
- generator frequency outside set parameters
- generator voltage outside set parameters
- battery voltage is abnormal
- failure to stop
- failure to crank
- loss of speed

The warning alarm will be triggered and the protection system will shut down the set under the following conditions:

- low oil pressure
- high water temperature
- overspeed or underspeed
- generator over current
- emergency stop button pressed

## Rating Definitions to ISO 8528-1

### Rating Conditions

A standard generating set is designed to operate in environmental reference conditions of 25 °C, 100 kPa and 30% humidity.

### Prime Power

This rating is for the supply of continuous electrical power (at variable load) in lieu of commercially purchased power. There is no limitation on the annual hours of operation and 10% overload power can be supplied for one hour in twelve hours.


### Standby Power

This rating is for the supply of continuous electrical power (at variable load) in the event of a utility power failure. No overload is permitted.

# OMEGA Series: LLO 200 Genset (50 Hz) Technical Data Sheet

Approximate Dimensions and Weight				
Omega genset:		LLO 200/175	LLO 200/200	LLO 200/225
		Dry weight	kg	2000
	lb	4400	4620	4840
Length (A)	mm	2790	2790	2790
	in	110	110	110
Height (B)	mm	1600	1600	1600
	in	63	63	62
Width (C)	mm	870	870	870
	in	34	34	34

Omega LLO 200 generating set  
side elevation (left); end elevation (right)



## Distributor's Address



### UK

Lister Petter Limited, Dursley, Gloucestershire  
GL11 4HS England; Tel: +44 (0)1453 544141;

Fax: +44 (0)1453 546732;

E-mail: sales@lister-petter.co.uk <http://www.lister-petter.co.uk>

### USA

Lister Petter Americas Inc. 815 E. 56 Highway, Olathe, Kansas 66061 USA

Tel: +1 913 764-3512; Fax: +1 913 764-5493;

E-mail: info@lister-petter.com; <http://www.lister-petter.com>

### France

Lister Petter France, 17 Avenue de l'Escouvrier, Zone d'Activités,  
95842 Sarcelles Cedex, France; Tel: +33 (0)1 39330420;

Fax: +33 (0)1 34195760; E-mail: commercial@lister-petter-france.fr

### India

Lister Petter India (P) Ltd, 32/2/5/1, Kondhawa (BK), Pune 411048 India

Tel: +91 20 2693 2688/3644/3645; Fax: +91 20 2693 3286

Email: smith@listerpetterindia.com

### China

Lister Petter China, Jinan Fuqiang Power Co. Ltd, Shandong Zhangqiu  
Industrial Area, Jinan 250220, P.R. China

Tel: +86 531 8558 4852; Fax: +86 531 8558 4820

Lister Petter have made efforts to ensure that the information in this data sheet is accurate but reserve the right to amend specifications and information without notice and without obligation or liability.